



CHARINGWORTH MANOR
HOTEL

Your meeting or event venue in the Cotswolds



- Conferences
- Board meetings
- Training days
- Exclusive use option
- Corporate retreats
- Private dining
- Launches and presentations
- Team building

Charingworth is a stunning fourteenth century manor house which lies in rolling Cotswold countryside. Close to the historic towns of Chipping Campden, Moreton-in-Marsh and Stratford-upon-Avon, yet not far from the M40 and Birmingham, this mellow stone house in set in mature gardens commands views over five counties.

The hotel blends original features – old beams, antique furniture and roaring log fires – with recently refurbished bedrooms that offer all the luxury and comfort and facilities you would expect from a top class hotel. You'll find privacy and a peaceful atmosphere combined with an efficient team and full-business service.

The hotel's health spa, with heated pool, sauna, steam room and gym, is the ideal place to prepare for the day ahead or to unwind afterwards. Delegates can then enjoy a fine dinner in the two-rosette restaurant or dine in their own private dining room.

There are two dedicated conference suites to suit your events, ample parking, a heli-pad and free Wi-Fi is available throughout the property.

Our Conference and Banqueting team can tailor-make your event to match your precise requirements and we will be on hand to make sure everything runs smoothly. Call us to discuss your plans.

26 luxury bedrooms ■

Landscaped gardens ■

Heli-pad ■

Naturally-lit conference suites ■

Spa, pool, gym and tennis court ■

24 hour technical support ■

Easy access to the M40 and M5 ■

Ample free parking ■

Free Wi-Fi ■



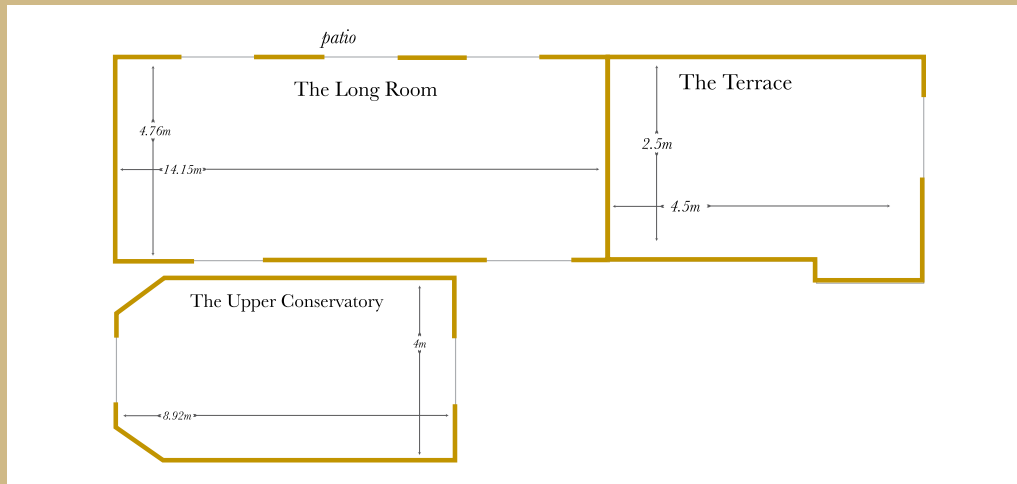
CHARINGWORTH MANOR
HOTEL

Your meeting or event venue in the Cotswolds

Room Details

Room Name	Location	Daylight	Length	Width	Height	Theatre	Classroom	Cabaret	U-shape	Boardroom	Dinner Dance
Long Room	G Floor	✓	14.15	4.76	2.2	60	20	35	40	40	50
Upper Conservatory	G Floor	✓	8.92	4	2.4	30	12	20	16	16*	20
Terrace	G Floor	✓	5	5	2.2	20	n/a	10	10	n/a	10

Measurements in m and sq m



Our Facilities:

The Long Room -

With its magnificent stone fireplace, and oak panelled walls this is ideal for board meetings, training sessions, brainstorming and banquets for up to 60 delegates. French doors open on to a terrace area with views over Cotswold countryside.

The Upper Conservatory and Terrace -

Ideal for smaller meetings, training days, brainstorm session, interviews and private dining.

Exclusive Use -

Charingworth Manor is perfect for events that require exclusive use over 2 days or more.

The Grounds -

Our peaceful landscaped gardens provide opportunities for team building challenges, barbecues and sporting events such as archery, laser clay pigeon shooting and other leisure activities. There are also dedicated team building companies in the area who can work with us to tailor-make a leadership event or teambuilding day for you.

How to find us:

By Road:

Leave the M40 at junction 15. At the roundabout take the exit onto the A429 signposted Stow. Follow the A429 for the next four roundabouts. At the fifth roundabout, take the second exit onto the Fosse Way - A429 which enters Halford. At the next roundabout take the second exit - A429 for Moreton-in-Marsh, Stow. After three miles, approx, turn right at the crossroads onto the B4035 for Chipping Campden. Charingworth Manor is approximately 1.5 miles on your right-hand side.

By Rail:

Moreton-in-Marsh (direct line) 9 miles
Warwick Parkway (direct line) 16 miles

By Air:

Birmingham International 38 miles



For further details on our facilities, please go to charingworthmanor.classiclodges.co.uk